



# MV Corbis (+1943)

## Details

### general

nationality: [british](#)  
 purpose: [transport](#)  
 type: [tanker](#)  
 propulsion: [motor vessel](#)  
 date built: 1931

### details

weight (tons): 8132 grt  
 dimensions: 142,8 x 18,9 x 10,3 m  
 engine: 2x 6cyl diesel engines, twin screws.  
 power: 714 n.h.p.  
 speed: 11.5 knots

### about the loss

cause lost: [torpedo](#)  
 date lost: [18/04/1943](#) [dd/mm/yyyy]  
 casualties:

### about people

builder: [Workman, Clark & Co. Ltd., Belfast](#)  
 owner: [Anglo-Saxon Petroleum Co. Ltd., London](#)  
 captain:

### about the wreck

depth:  
 orientation:  
 protected:  
 war grave:

### updates

entered by: [Allen Tony](#)  
 entered: 20/12/2007  
 last update: [Vleggeert Nico](#)  
 last update: 17/07/2009

## Position

[Allen Tony](#) 20/12/2007

latitude: 34°56'00" S  
 longitude: 034°03'00" E  
 division: 1'=60"  
 remarks: Position is PA.  
 ref. used: [www.ubootwaffe.net](#)

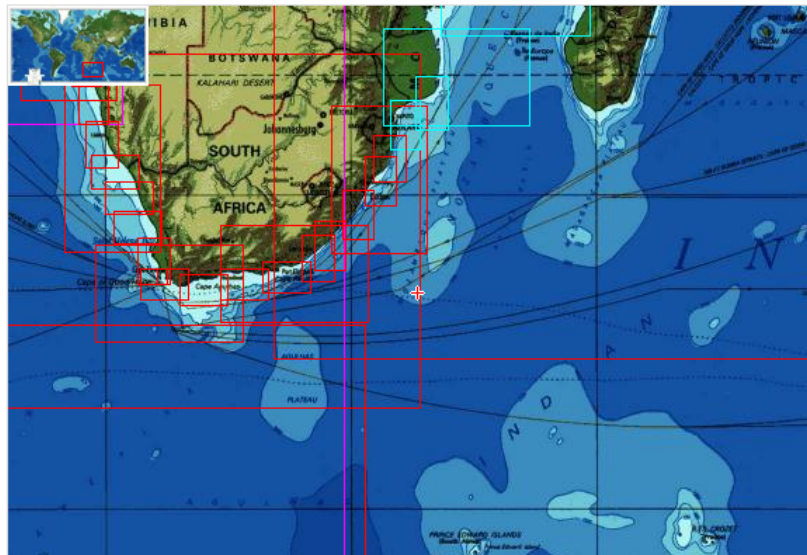
[add position to my marks](#)

show neighbour. wrecks: [members only](#)

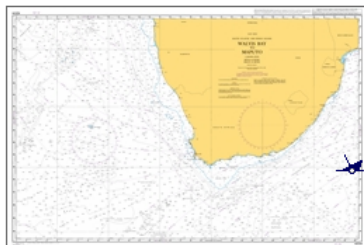
[check AIS](#)

[insert new position](#)

## The Wreck today



## Pictures



[Letlens Jan](#) 03/08/2010

[Walvis Bay to Maputo](#)

This is a thumbnail version of the chart **Walvis Bay to Maputo**. You do not have sufficient rights to see this chart in full resolution [11574x7442 pixels]. Click [this link](#) to subscribe to this service.



[insert new picture](#)

## History

[Allen Tony](#) 20/12/2007

Corbis MV was a British Motor Tanker of 8,132 tons built in 1931. On the 18th April 1943 when on route from ABADAN & BENDAR ABBAS for TABLE BAY carrying a cargo of 13,100 tons of diesel oil and 50 tons of aviation spirit she was torpedoed by German submarine U-180 and sunk. 50 crew lost from a total of 60.

ref. used: [www.ubootwaffe.net](#)

[insert new history](#)

## Documents

[insert new document](#)